



NS4500

Browser-Based Publishing System

The R-Quest NS4500

comes complete and ready to produce discs right out of the box.

Featuring TrueNet FX, this is the first and only operating system independent publishing solution *without* the need to maintain an embedded Windows, Linux, Unix or Mac server.



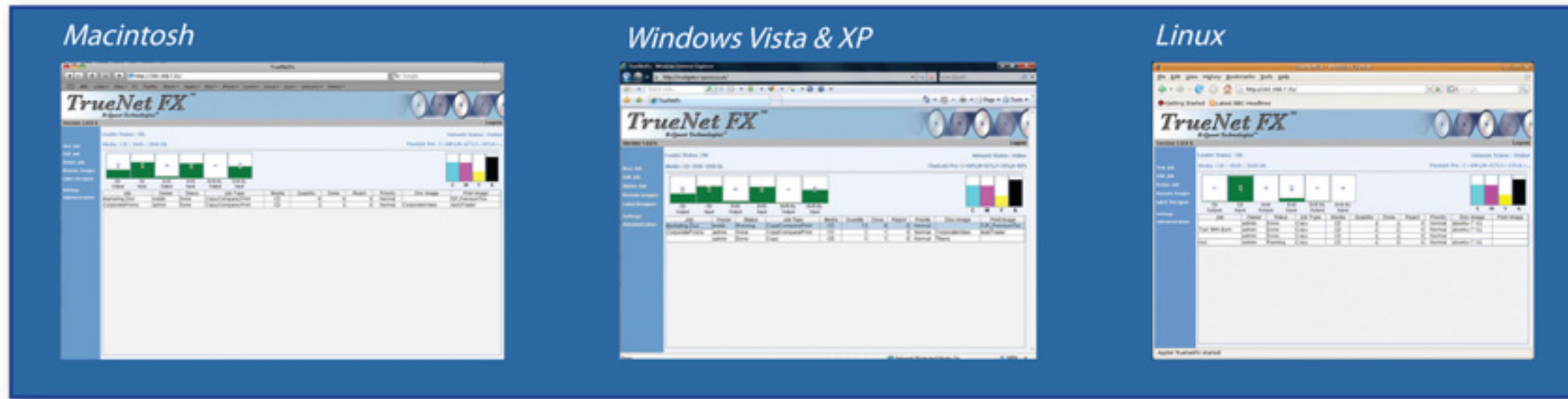
All publishing functions are easily accessed via a simple Java-enabled web browser. No clumsy client software applications to install or maintain. The role based user configuration & security settings control access to key features in the system, with access monitored and logged for later administrator or management review. Live monitoring of jobs and instant control over job priority means that mission critical publishing tasks go straight to the front of the queue!



Browser Based Publishing Software

TrueNet FX

TrueNet FX is the first and only operating system independent browser based publishing solution, without the need for an embedded Windows, Linux, Unix or Mac server. Running inside all major Java-enabled browsers, TrueNet FX eliminates the need to install or maintain any client software or printer drivers on the user's computer.



Publish Discs Quickly & Easily

Create New Job

Job Reference: Quantity: Media:

Disc Image:

Print Image:

Job Settings

☒ Copy ☒ Print ☒ Fast Start ☐ Compare ☒ Audit ☐ No Overlap ☐ Serialize ☐ Dynamic Print

Priority: Write Speed:

- Drag & Drop Mastering
- Import standard ISO images - even up to 50GB Blu-ray!
- Use images stored directly on NS4500 internal HDD
- 10 Job modes, including Copy, Compare, Audit and Printing
- Easy choice of media type
- Up to FIVE different media types available simultaneously
- Write speed selectable when creating job
- Compare and Audit functions selectable when creating job
- Live edit of running jobs including changes to Quantity, Compare & Audit functions.
- Live changes to job priority - send a job to the front of the queue! (can be controlled by the administrator)

E-Mail Notifications

User selectable e-mail notification options include:

- Job Start
- Job Complete
- Low Media
- Media Empty
- Low Print Supplies
- Print Supplies Empty
- Job Delayed
- Job Error

...even when caused by jobs ahead of yours in the queue!

E-Mail Settings

☒ On Job Start ☒ On Hopper Empty

☒ On Job Complete ☒ On Low Media

☒ On Loader Error ☒ On Low Printer Supplies

☒ On Delayed/Resumed Job Queue

Remote Files

Name	Type	Size
CorporateVideo	CD	75.7MB
FJP_PremiumTex	Print	1MB

☐ Include temporary image files

E-Mail Server

Server:

From:

☒ Server requires POP before SMTP

Login:

Password:

☒ Enable E-Mails

Dynamic Label Setup

CSV File:

Start Line: Delimiter:

Create Data Disc

File System: Media Type: ☐ Test default



Label Editor Built In

TrueNet FX includes a flexible label editor enabling you to create great looking labels within your browser! No need to install printer drivers or create PRN files.

- Easy import of standard graphic files
- Easily add embedded Time & Date tags to your labels
- Easily add Serialization to your publishing jobs
- Easily add dynamic 'mail merge' text to your jobs from a simple text file
- Easily add Arc text for copyright or other notices
- Easily Bar Code your discs
- WYSIWYG Editing
- Up to 99 unique fields

Administration Made Easy



- Jobs automatically restored and resumed after power failure for true lights out reliability
- Stand-alone Mode includes all core job functions including Copy, Compare, Audit and Print, without the need for network connectivity, giving completely autonomous and secure operation
- Masters can be loaded directly to the machine via dedicated reader (included)
- Full system diagnosis accessed directly via built in LCD/Touch pad without the need to use any PC
- Dual Firmware support for system redundancy
- Fully self-contained
- Operating system independent
- No Server-software maintenance required
- No Anti-Virus software needed
- Easily Add & Configure Users
- Role Based User Access & Security
- Easy E-Mail Setup
- Easy setup of Low Media and Low Print thresholds
- Easy Hopper & Media setup Wizard
 - * Multiple media types simultaneously available
 - * Six Rotating Hoppers for maximum capacity
- Comprehensive Logging Features include :
 - * User Activity
 - * Job Activity
 - * Robotics Movements
 - * Recorder Activity
 - * Media Levels
 - * Printer Supply Levels

...and more!





NS4500

All functions operate entirely within the browser, from Drag and Drop Mastering to serialized unique labels. No need to load printer drivers or share unsecured network resources!

This four recorder 500 disc capacity unit can burn and print at high speed. Choose from a FlashJet Pro 4800dpi InkJet or TEAC P55 Thermal Retransfer printer. Simultaneously access up to 5 different types of media using the administrator configurable hoppers.

CD, DVD & Blu-ray configurations are all supported using R-Quest's proprietary controller technology, featuring fully asynchronous recording & printing for the fastest publishing of one-off unique discs, and all the way up to large run mass duplication. No other solution provides such a fast and flexible way to publish discs!

The NS4500 is truly a revolution in disc publishing!



Product Code	Printer Options
NS4500i (FlashJet Pro) Inkjet	4800 dpi Black Gray scale/CMYK/CMY Photo modes Typically 1500 to 2000 discs per cart set
NS4500t (P-55 Embedded) Thermal Retransfer	400 dpi Black/Color/Photo/Versamax support 500 discs per ribbon set

Disc Capacity / Enclosure	Disc Drives	Connectivity	Weight / Dimensions	Power
500 discs Up to five different media types at the same time Separate reject bin/ With lockable door	<ul style="list-style-type: none"> • Four CD/DVD/DL DVD writers standard (Blu-ray optional) • One CD/DVD/DL DVD dedicated reader standard (Blu-ray optional) • Raid HD 480GB (160GB X 3) Hard Drive Standard – Higher Capacity Options Available 	10/100/1000Mb Gigabit Ethernet Can be operated in standalone mode without network	NS4500i (FlashJet Pro) 80 lbs (36.3 kg) NS4500t (P-55 Embedded) 95 lbs (43 kg)/ Height 27 ½" x Width 21" x Depth 22" (H 698mm x W 528mm x D 560mm)	100-230 VAC, 60/50 Hz 500W Max